

Illicit Wildlife Trafficking

Correspondent Banking Academy

Can you
imagine a
world
without



A word cloud visualization centered around the theme of ivory trade and wildlife crime. The most prominent words are "ivory", "trade", "crime", "money", "elephant", "illegal", "hippopotamus", "tusk", "ban", "slaughter", "cruelty", "barbarism", "poaching", "wildlife", "endangered species", "luxury", "commodity", "animal rights", "conservation", "smuggling", "jewelry", "ecology", "environmental crime", "cruelty", "brutality", "Asia", "Africa", "narwhal", "walrus", "killing", "hunt", "crimes", "barbarism", "poaching", "wildlife", "endangered species", "luxury", "commodity", "animal rights", "conservation", "smuggling", "jewelry", "ecology", "environmental crime", "cruelty", "brutality", "Asia", "Africa", "narwhal", "walrus", "killing", "hunt", "crimes". The words are arranged in a dense, overlapping manner, with larger fonts indicating higher frequency or importance.

Why You Should Protect Endangered Wildlife




**It's the right
thing to do.....**

- **Promotes Biodiversity**
- **Provides Benefits for Humans**
- **Preserves Natural Habitat**

ILLEGAL WILDLIFE TRADE

Driven by Demand for Wildlife & Wildlife Products



CRIMINAL MARKET
ANNUALLY: US \$ 7-23 billion, TOP 10
4th Largest Trafficking Market;
INVOLVES: ORGANIZED CRIME
HUMAN TRAFFICKING
TERRORISM FINANCE
CORRUPTION

IMPACT ON KEY SPECIES:

Every year 30,000 African Elephants are killed, approx 100 every day (WWF). Over the last 10 years, Tanzania has lost 60% of its Elephant Population

80% of the world's Rhino's live in SA:
> in 2007 S Africa lost 13 Rhino's
> in 2016 it lost 1,054: ~3 Rhinos are killed Each Day
(since 1970's the World's Rhino Population has decreased by 90%)

The World's Most Illegally Traded Animal:
1 mln have been poached In the last Decade:
~ 100,000 a year

ALSO: More than 7,000 Species in 120 Countries are at RISK



TACKLING IWT:

Only 26% of Key Countries have conducted any Financial Investigations into IWT	only 11% of Key Countries have conducted any Investigation beyond the Poacher or Courier involved	Only 7% of Investigations resulted in Prison Sentences 1% in a Serious Prison Sentence
--	---	---

SOURCES:
WWF, CITES, UNODC, National Geographic, TRAFFIC, United for Wildlife



What Will I Do?

Wildlife Trafficking is a global Problem

Discuss

Political Risks
associated with
wildlife
trafficking

1

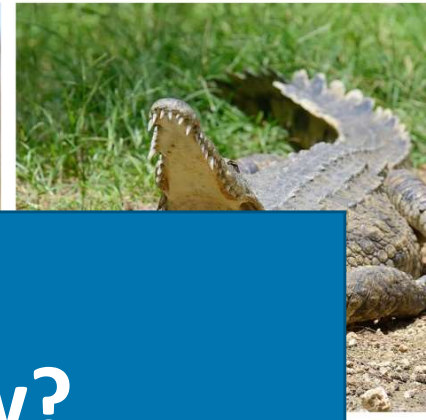
Understand
International
efforts to fight
illicit wildlife
trade

2

Look at

Methodology,
Current Trends
& Red Flags for
FIs

3



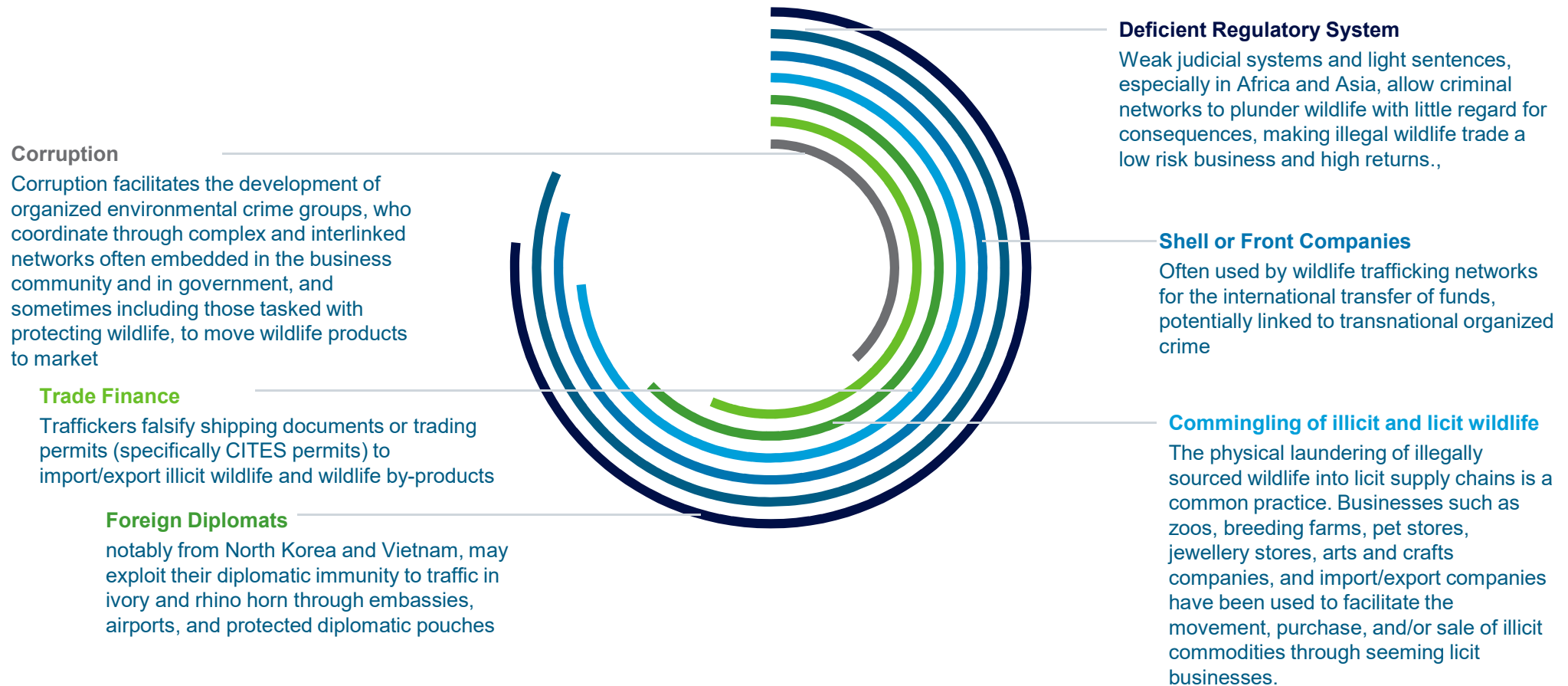
Wildlife Trafficking: What Do You Know?



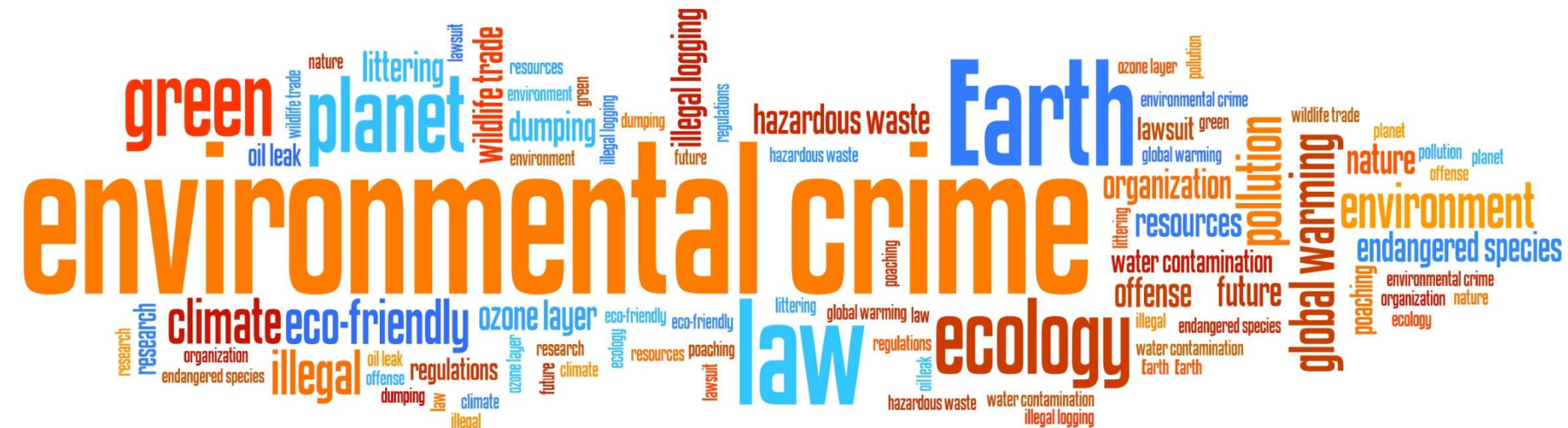
Wildlife Trafficking – What Do You Know?

- *How much does the illegal wildlife trade worth each year?*
 - **\$7-23 billion** per UNEP. Environmental crime as a whole is one of the fastest-growing and most lucrative sectors of global criminal activity, and is now estimated to be **US\$91-258** annually (2016), which has increased 26 percent from a 2014 estimate. Its current estimated value makes environmental crime the **fourth** largest crime in the world after drug trafficking, counterfeit crimes, and human trafficking
- *Does illegal wildlife trade only include elephant tusks and rhino horns?*
 - No. The illicit wildlife trade is comprised of a range of fauna, including animals such as gorillas, chimpanzees, elephants, tigers, rhinos, Tibetan antelopes, bears, birds, pangolins, reptiles, sturgeon, and more. Trade includes both live and dead specimens or products thereof, which may be traded as domestic pets or be used for pharmaceutical, food, ornamental, or medicinal purposes.
- *How many African elephants are poached a year?*
 - Between **35,000 – 50,000**. In Tanzania, an average of 3,000 elephants have been killed each year in the past decade, with an annual street market value for ivory at \$10.5 million. This is five times the national budget for wildlife conservation. It is further noted that over the past 25 years, the wholesale price of ivory in China has risen from US\$5 to **US\$2,100** per kilo.
- *How many Rhinos were killed in South Africa?*
 - 13 rhinos were poached in 2007. However, the figure skyrocketed to **1,215** or **>9,300%** in 2014, rhino horn having become more valuable than gold or cocaine in the past decade.
 - Despite scientific evidence refuting the efficacy of rhino horn to treat illnesses such as cancer, it still remains a popular ingredient in traditional medicine.
- *How many National Park Rangers have been killed in the past 10 years?*
 - **1,000**
- *Does wildlife trafficking link to other financial crimes?*
 - Yes such as money laundering, terrorist financing (i.e.: al Shabaab), bribery/corruption...

Key Enablers



What is Illegal Wildlife Trade Worth Annually?



\$7 – 23 Billion

Illegal Wildlife Trade Only Elephants & Rhinos?



NO

of African Elephants Poached Annually?

35,000 – 50,000



of Rhinos Were Killed in South Africa in 2014?

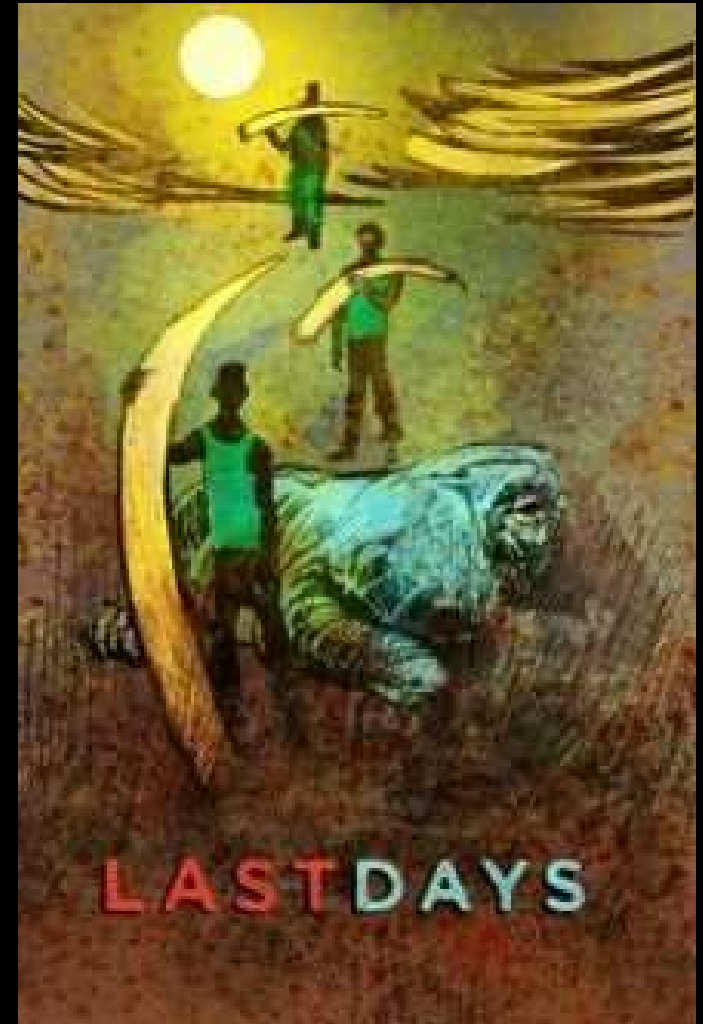


National Park Rangers killed in past 10 years?

1,000

Wildlife Trafficking Link to Other Financial Crimes?

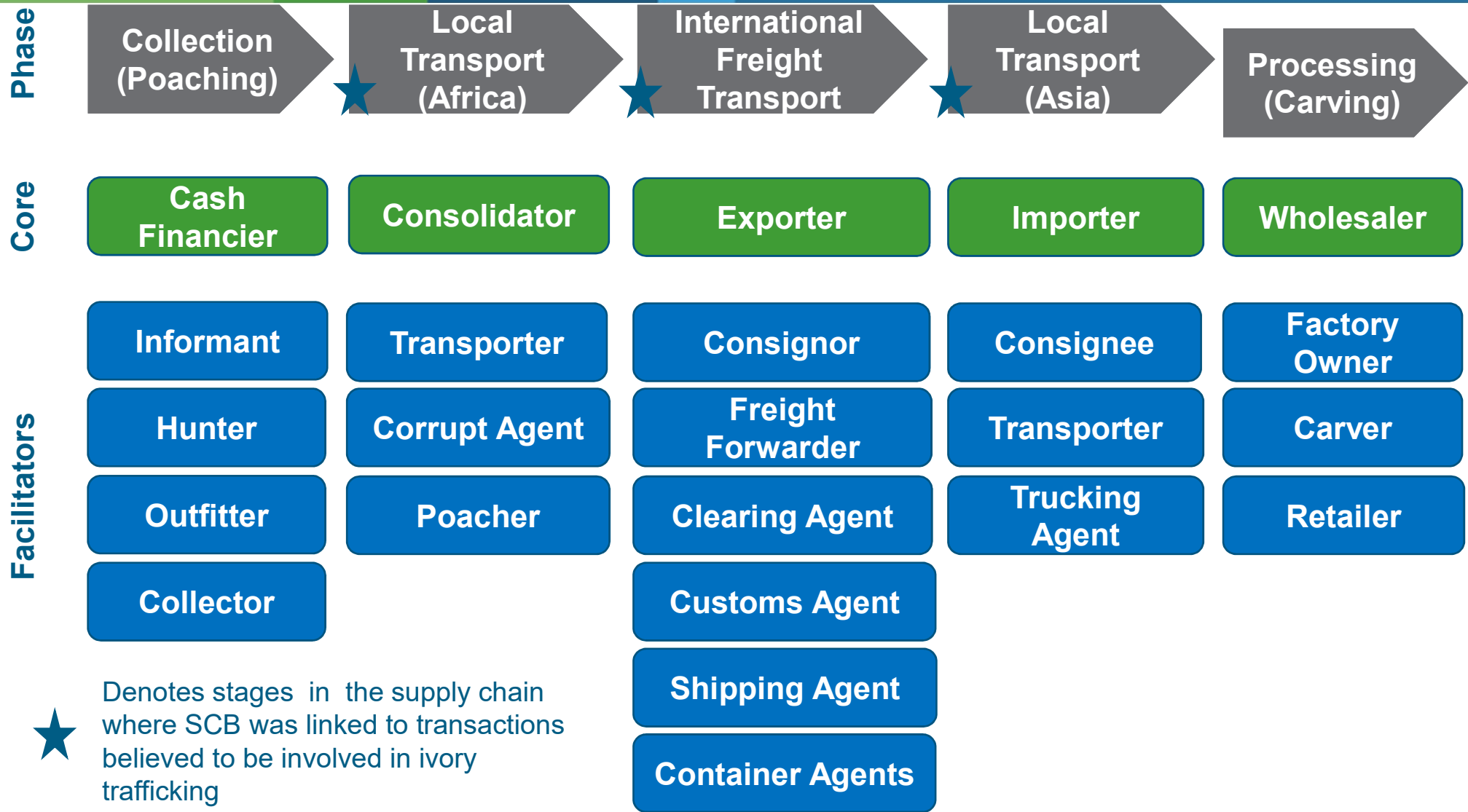
Last Days is a 2014 animated short documentary about the ivory trade by director Kathryn Bigelow. Ms Bigelow's other films include **Detroit**, **The Hurt Locker** and **Zero Dark Thirty**.



Wildlife Trafficking Supply Chain



Stages of Increased Vulnerability for SCB



For More Information On Tusk Trade



Tracking the Illegal Tusk Trade

Elephant ivory is a key source of funding for armed groups in central Africa like the Lord's Resistance Army.

<http://www.nationalgeographic.com/tracking-ivory/map.html>



The Human Toll of Ivory Poaching

Rangers, armed groups, villagers – meet the people who are profiting or suffering in the central African poaching frenzy.

<http://www.nationalgeographic.com/tracking-ivory/index.html>



Tracking Illegal Traders

Expose on the working of the illegal ivory trade

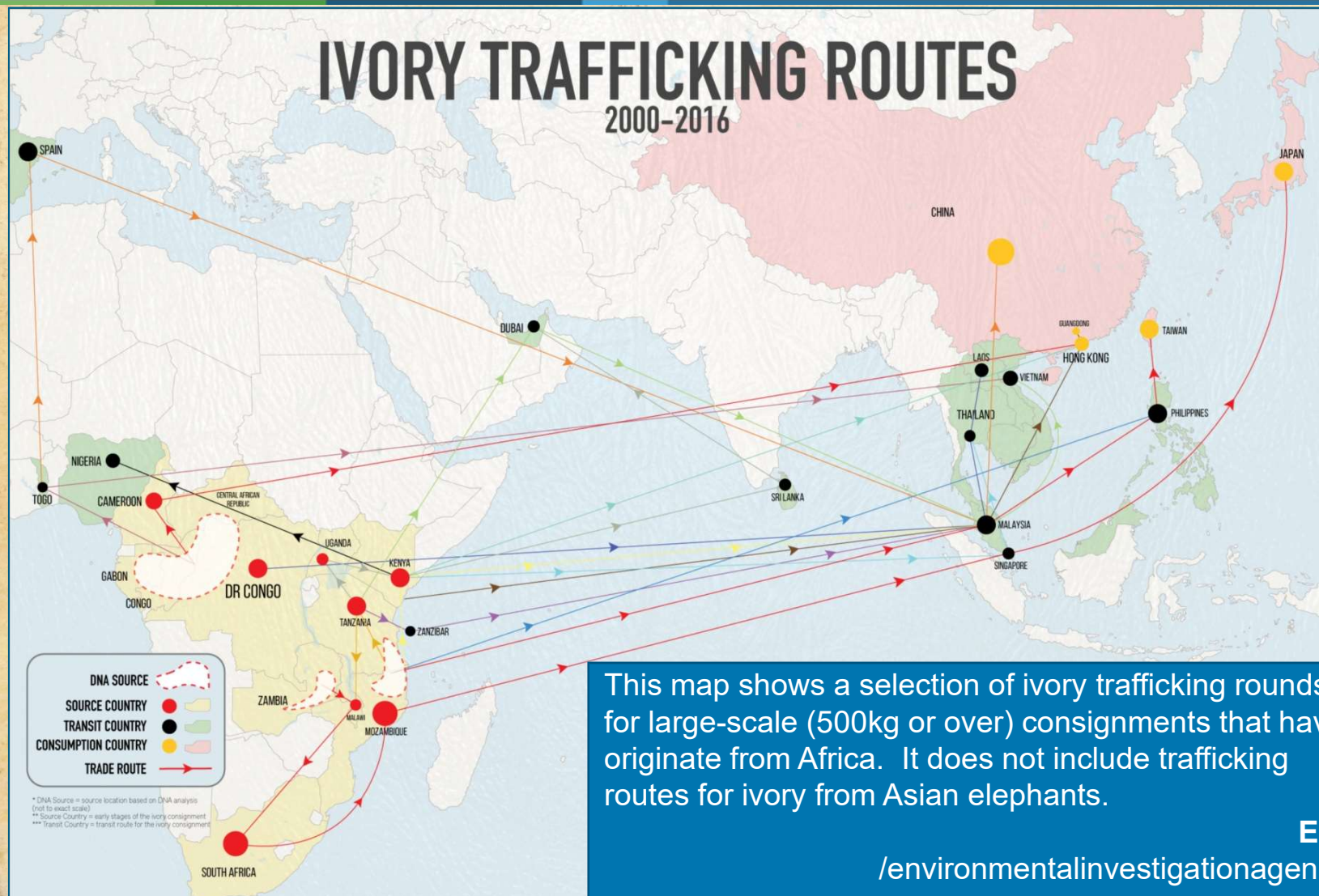
http://ngm.nationalgeographic.com/2015/09/editors-note?_ga=2.113014020.1098949395.1521574032-968158887.1521574032



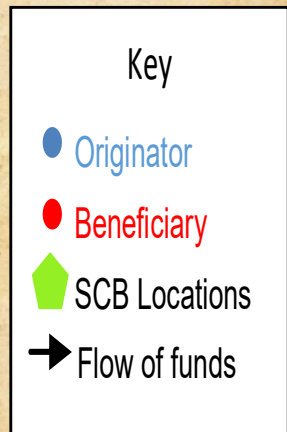
Twelve Nat Geo Stories that exposed Wildlife Exploitation

https://news.nationalgeographic.com/2015/11/151107-national-geographic-wildlife-crime-trafficking-animals/?_ga=2.150802614.1098949395.1521574032-968158887.1521574032

Ivory Trafficking Physical Routes



African Ivory Trafficking Financial Routes



Wildlife Trafficking Enablers & Red Flags

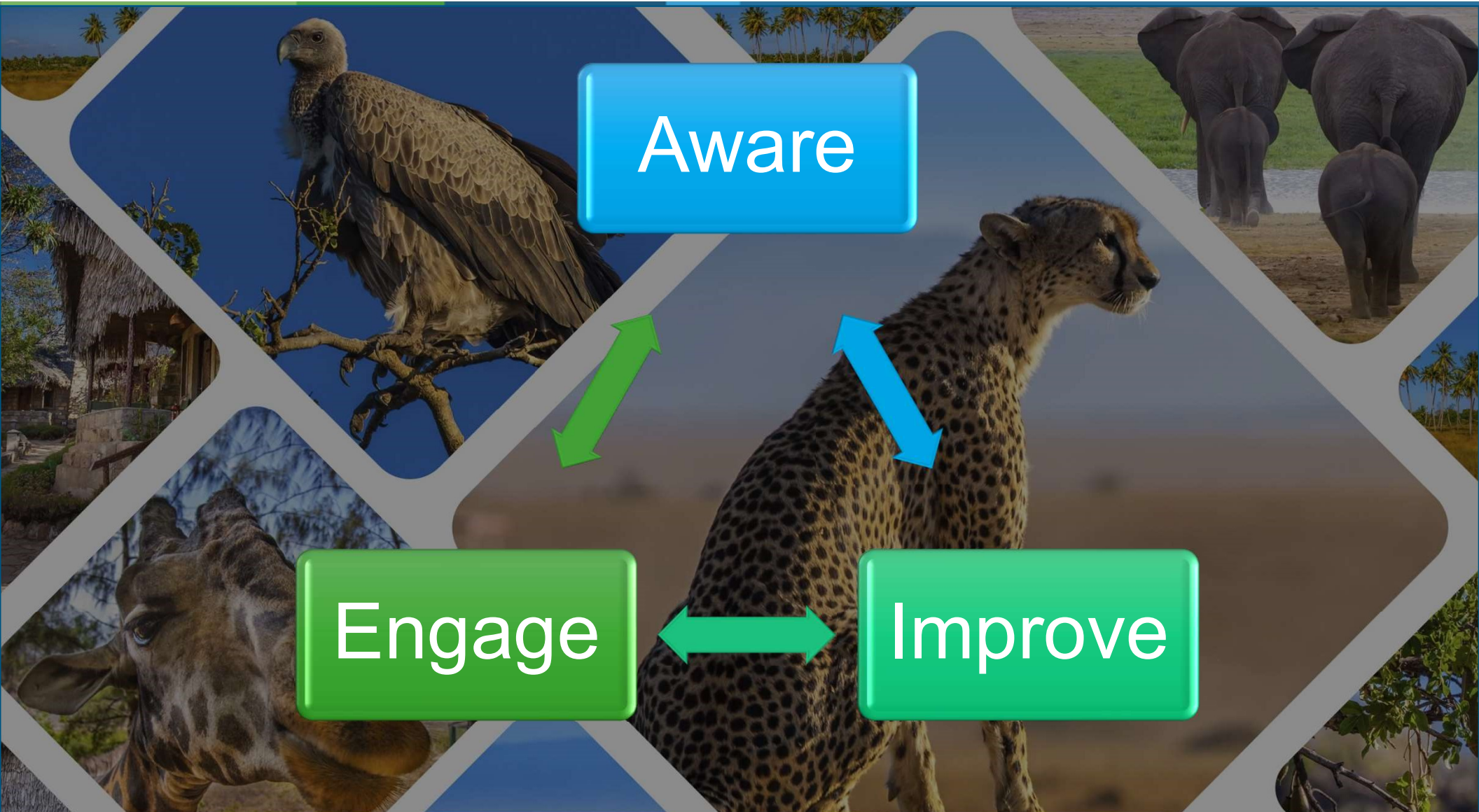
- **Bribery and Corruption**
- **Trade Finance**
- **Trade Corridors**
- **Shell/Front Companies**
- **Cyber-enabled Illicit Trading**



Wildlife Trafficking Enablers & Red Flags

- Trafficking networks utilize the formal international financial systems to transfer funds across geographic boundaries. Most transactions are conducted in **US dollars or Euros**.
- Traffickers **nest or hide illegally acquired wildlife within licit transport systems** to physically obfuscate goods. While research suggests it is difficult to specify commonly-used cover products, generally low-value dry goods are used as cover material such as pungent items, dry agricultural products, waste materials, cement, wooden crafts or mobile phone parts...
- **Shell or 'front' companies** (offshore, trust, holdings, etc.) with little or no beneficiary information are often used by wildlife trafficking networks for the international transfer of funds.
- The use of **false trade documents or illegally acquiring trade documents** to traffic illegally sourced wildlife. Illegal wildlife traffickers disguise the criminal nature of commodities through comingling with legal commodities or the falsification of shipping documents or CITES permits. Small shipping ports may also be chosen above large ports to circumvent robust screening processes. Recent data shows an uptick in the **use of air carriers** to traffic ivory and other natural resources.
- The existence of bribery and corruption through **politically exposed persons (PEPs)** to enable illicit wildlife trade such as involvement of embassies, consulates located in Africa, illegal bribes to port and customs agents or to law enforcement and judicial officials to influence investigations or evade prosecution.
- **Cyber-enabled illicit trading** of wildlife goods. It is suspected that buyers and sellers of ivory meet electronically, but the volume of chartered retail sales to date is minimal and likely underreported.

Banks Fighting Wildlife Crime



SCB On Forefront to Prevent Wildlife Tracking

“Wildlife crime having devastating impact on endangered species – important to prevent criminals involved from being able to launder their ill-gotten gains through banking systems. Met Standard Chartered Bank this week to hear about their great work in tackling money laundering”

@BorisJohnson
Boris Johnson
UK Prime Minister



What SCB Has Done to Prevent Wildlife Tracking

- **Conducted** Global Threat Assessment on Wildlife Trafficking and Illegal Logging
- **Established** Public-Private Partnerships with
 - Royal United Services Institute (RUSI)
 - UK Government
 - NGOs/ThinkTanks
- **Facilitated** Training



What Did I Do?

Wildlife Trafficking is a global Problem



In Closing: What I Can To Prevent Wildlife Trafficking



Remember that sea and air cargo are used to move endangered animal products



Know Your Customer



Become a wildlife ambassador and raise awareness



They need our help!!!

United for Wildlife Financial Taskforce



United for
Wildlife Financial
Taskforce

20+
financial institutions

**To make a difference, Taskforce
members are committing to...**

Deliver conservation
intelligence to the heart
of the financial system

Prioritise the issue
within member
institutions and use
their expertise in
fighting financial crime

Better utilise existing
partnerships among
law enforcement,
financial institutions,
regulators and NGOs
to unearth connections



Bank of America
Merrill Lynch 



BNP PARIBAS



J.P. Morgan



CREDIT SUISSE 



Ecobank
The Pan African Bank



Morgan Stanley



Thank You



Disclaimer

This material has been prepared by one or more members of SC Group, where “SC Group” refers to Standard Chartered Bank and each of its holding companies, subsidiaries, related corporations, affiliates, representative and branch offices in any jurisdiction, and their respective directors, officers, employees and/or any persons connected with them. Standard Chartered Bank is authorised by the United Kingdom’s Prudential Regulation Authority and regulated by the United Kingdom’s Financial Conduct Authority and Prudential Regulation Authority.

This material is not research material and does not represent the views of the Standard Chartered research department. This material has been produced for reference and is not independent research or a research recommendation and should therefore not be relied upon as such. It is not directed at Retail Clients in the European Economic Area as defined by Directive 2004/39/EC. It has not been prepared in accordance with legal requirements designed to promote the independence of investment research and is not subject to any prohibition on dealing ahead of the dissemination of investment research.

This material is for information and discussion purposes only and does not constitute an invitation, recommendation or offer to subscribe for or purchase any of the products or services mentioned or to enter into any transaction. The information herein is not intended to be used as a general guide to investing and does not constitute investment advice or as a source of any specific investment recommendations as it has not been prepared with regard to the specific investment objectives, financial situation or particular needs of any particular person.

Information contained herein is subject to change at any time without notice, and has been obtained from sources believed to be reliable. Some of the information herein may have been obtained from public sources and while SC Group believes such information to be reliable, SC Group has not independently verified the information. Any opinions or views of third parties expressed in this material are those of the third parties identified, and not of SC Group. While all reasonable care has been taken in preparing this material, SC Group makes no representation or warranty as to its accuracy or completeness, and no responsibility or liability is accepted for any errors of fact, omission or for any opinion expressed herein. The members of SC Group may not have the necessary licenses to provide services or offer products in all countries, and/or such provision of services or offer of products may be subject to the regulatory requirements of each jurisdiction, and you should check with your relationship manager or usual contact. Any comments on investment, accounting, legal, regulatory or tax matters contained in this material should not be relied on or used as a basis to ascertain the various results or implications arising from the matters contained herein, and you are advised to exercise your own independent judgment (with the advice of your investment, accounting, legal, regulatory, tax and other professional advisers as necessary) with respect to the risks and consequences of any matter contained herein. SC Group expressly disclaims any liability and responsibility whether arising in tort or contract or otherwise for any damage or losses you may suffer from your use of or reliance of the information contained herein.

This material is not independent of the trading strategies or positions of the members of SC Group. It is possible, and you should assume, that members of SC Group may have material interests in one or more of the financial instruments mentioned herein. If specific companies are mentioned in this material, members of SC Group may at times seek to do business with the companies covered in this material; hold a position in, or have economic exposure to, such companies; and/or invest in the financial products issued by these companies. Further, members of SC Group may be involved in activities such as dealing in, holding, acting as market makers or performing financial or advisory services in relation to any of the products referred to in this material. Accordingly, SC Group may have conflicts of interest that may affect the objectivity of this material.

You may wish to refer to the incorporation details of Standard Chartered PLC, Standard Chartered Bank and their subsidiaries at <http://www.sc.com/en/incorporation-details.html>.

This material is not for distribution to any person to which, or any jurisdiction in which, its distribution would be prohibited.

© 2019 Standard Chartered Bank. All rights reserved. All copyrights subsisting and arising out of these materials belong to Standard Chartered Bank and may not be reproduced, distributed, amended, modified, adapted, transmitted in any form, or translated in any way without the prior written consent of Standard Chartered Bank.